

New from Stewart & Stevenson

Gaseous Fueled Power Generation

Prime Power

Combined Heat and Power Applications

Powered by:

- MTU Onsite Energy Series 4000 Natural Gas Engine
 - Electric Output 764 – 1930 kW
- MTU Onsite Energy Series 400 Natural Gas Engine
 - Electric Output 128 – 354 kW

Natural Gas CHP Systems

Focus on Overall Efficiency

Applications

- Cogeneration
- Trigeneration

Benefits

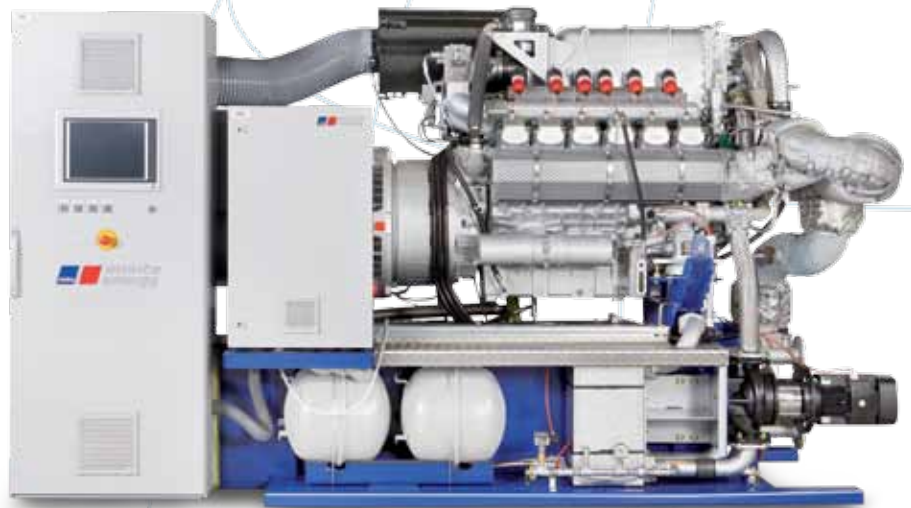
- Efficient – low fuel consumption
- Economical – low life cycle costs
- Eco-friendly – low emissions
- Independent – reliable supply

Technical Features

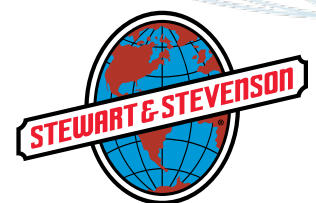
- Skid mounted genset
- Flexible coupling between engine and 480V alternator (2 bearing)
- Base frame with integrated exhaust silencer, catalyst and heat recovery system from jacket water, lube oil, exhaust and mixture cooling (as applicable)
- Gas train (delivered loose) and hose
- MMC-panel
- Emission level acc. to 40CFR 60 JJJJ Table 1

Additionally for Series 4000 GB

- Step up gearbox between engine and alternator



See Back For Product Specifications



A Century of Innovation

Product Portfolio



PRODUCT PORTFOLIO S400

Version	Gas	Engine Power (kW)	El. Output (kWe)	Th. Output (kBTU/h)	Total Energy Input (kBTU/hr)	El. Efficiency (%)	Total Efficiency (%)
GC 128N6	NG	135	128	758	1,298	33.7	92.1
GC 180N6	NG	190	180	1,079	1,889	32.5	89.7
GC 248N6	NG	260	248	1,455	2,501	33.6	91.5
GC 354N6	NG	370	354	2,025	3,579	33.8	90.4
GC 200B6	BG	210	200	1,455	2,501	35.8	80.0
GC 350B6	BG	366	350	2,025	3,579	34.9	90.9

MMC MTU Module Control Series 400 Only

Features

- Speed control
- Power control
- Lambda control
- Knocking control
- Dual fuel operation (gas)
- Start-Stop procedure
- Synchronizing
- Mains & generator protection
- Power export control
- Island operation
- Safety chain
- Jacket water control & preheating
- Heating water control
- Intercooler coolant control
- Emergency cooling water control
- Heating water reservoir
- Boiler selection
- Room temperature control
- Lube oil system control
- Valve flap control (exhaust & bypass)
- Data logger
- M-Graph
- SMS Email client
- Language selection & user level
- Remote monitoring & diagnostic
- Customer interfaces (e.g. Profibus DP)
- Clock timer & counter evaluation

PRODUCT PORTFOLIO S4000

Version	Engine Power (kW)	Efficiency Gearbox (%)	Power at Gearbox (kW)	Efficiency Generator (pf1, 480V) (%)	El. Output (kW)	Th. Output (kBTU/h)	Total Energy Input (kBTU/hr)	El. Efficiency (%)
GB/GR20V4000L62	2,000	99.40	1,988	97.10	1,930	3,678	15,986	41.20
GB/GR16V4000L62	1,600	99.34	1,589	97.30	1,547	2,975	12,847	41.08
GB/GR12V4000L62	1,200	99.10	1,189	97.30	1,157	2,252	9,629	41.00
GB/GR8V4000L62	800	98.90	791	96.50	764	1,512	6,425	40.55

Contact us today.

Albuquerque, NM

505-881-3511

Amarillo, TX

806-355-1688

Casper, WY

307-234-6975

Cleburne, TX

817-645-8106

Corpus Christi, TX

361-289-5350

Dallas, TX

214-631-5370

Denver, CO

303-287-7441

El Paso, TX

915-790-1848

Farmington, NM

505-325-5071

Gillette, WY

307-685-6413

Grand Junction, CO

970-248-4100

Houston, TX

713-671-6220

Lafayette, LA

337-837-9001

Longview, TX

903-758-5562

Lubbock, TX

806-745-4224

New Orleans, LA

504-347-4326

Odessa, TX

432-563-4800

Pharr, TX

956-787-6880

Pueblo, CO

719-543-7056

San Antonio, TX

210-662-1000

Waco, TX

254-857-4351

Wichita Falls, TX

940-322-5227

12-04-08 ©2012 Stewart & Stevenson

Visit us at www.stewartandstevenson.com

All data subject to change without notice. The information in this bulletin is believed to be accurate but all recommendations are made without warranty, since the conditions of use are beyond Stewart & Stevenson's control. Stewart & Stevenson disclaims any liability in connection with the use of this information, and does not warrant against infringement by reason of the use of any of its products in combination with other material or in any process. Stewart & Stevenson warrants only that the product complies with specifications agreed to in contracts of sale.



A Century of Innovation